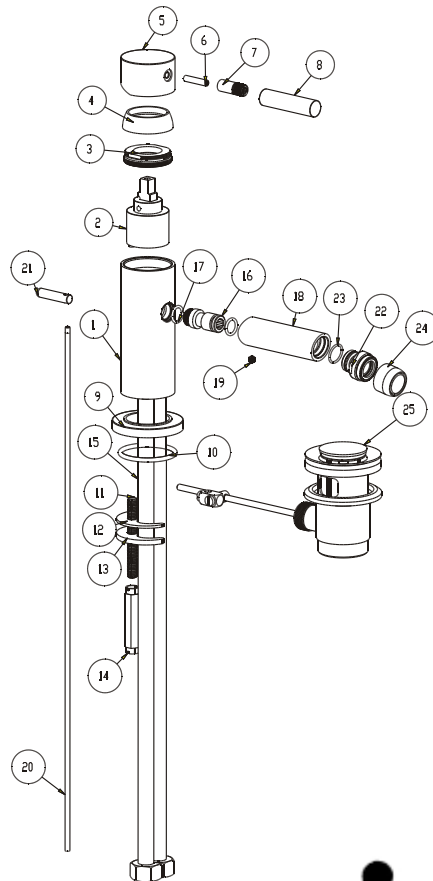


Single-lever bidet mixer

Installation Instruction

Please read this instruction carefully so as to avoid the installation difficulty.

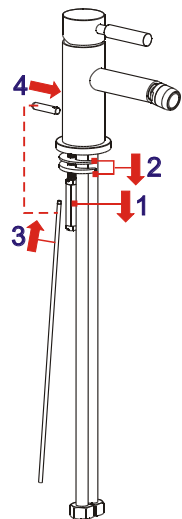


inocal

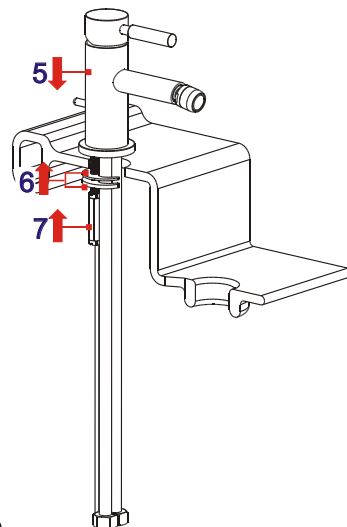
Components List

No.	Component	Material	Quantity
1	Cartridge seat	BRASS	1
2	Ceramic cartridge with muffle		1
3	Cartridge fastener	BRASS	1
4	Cap	BRASS	1
5	Handle cover	BRASS	1
6	Female allen screw	S.S 304	1
7	Connection rod for handle	BRASS	1
8	Handle	BRASS	1
9	Seat	BRASS	1
10	O-ring	NBR	1
11	Fixing bolt	S.S 304	1
12	Rubber fastening washer	NBR	1
13	Metal fastening washer	S.S 304	1
14	Fixing nut	BRASS	1
15	Flexible connection hose		2
16	Connection tube	BRASS	1
17	O-ring	NBR	2
18	Spout	BRASS	1
19	Female allen screw	S.S 304	1
20	Pop-up rod	BRASS	1
21	Pop-up knob	BRASS	1
22	Ball-joint fittings		1
23	O-ring	NBR	1
24	Aerator		1
25	Pop-up waste set		1

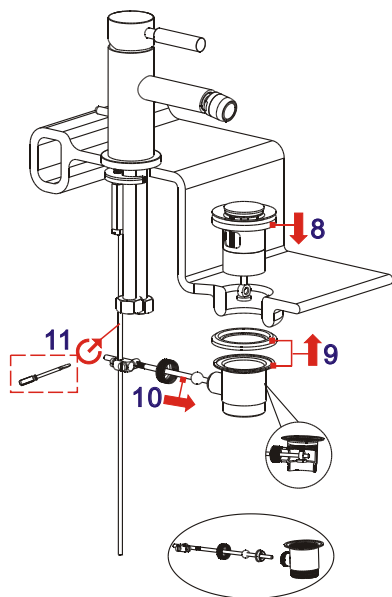
Installation Step



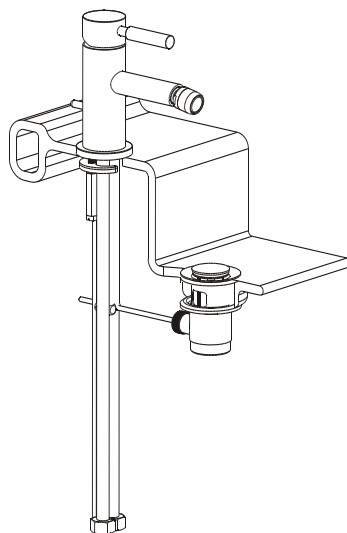
1



2

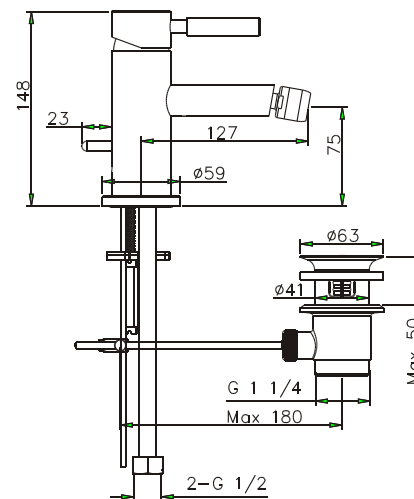


3

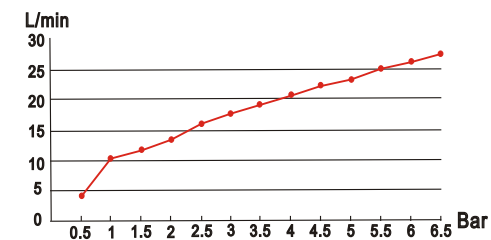


4

Installation Fig



Flow rate Curves



Test pressure: 1.6MPa (16bar)

Flow pressure:

Min 0.05MPa

Max 1.60MPa

Recommended pressure:

0.1MPa to 0.5MPa (1 to 5 bar)

Note

- 1.Ensure to clean the water supply pipe before installing to avoid being jammed.
- 2.The cold-water supply must be connected on the right and the hot-water supply on the left.
- 3.Check the installing dimension according to the Figure and ensure it is installed correctly.
- 4.Hot-water inlet must not be over 80°C.